

Building BLUEcloud Discovery

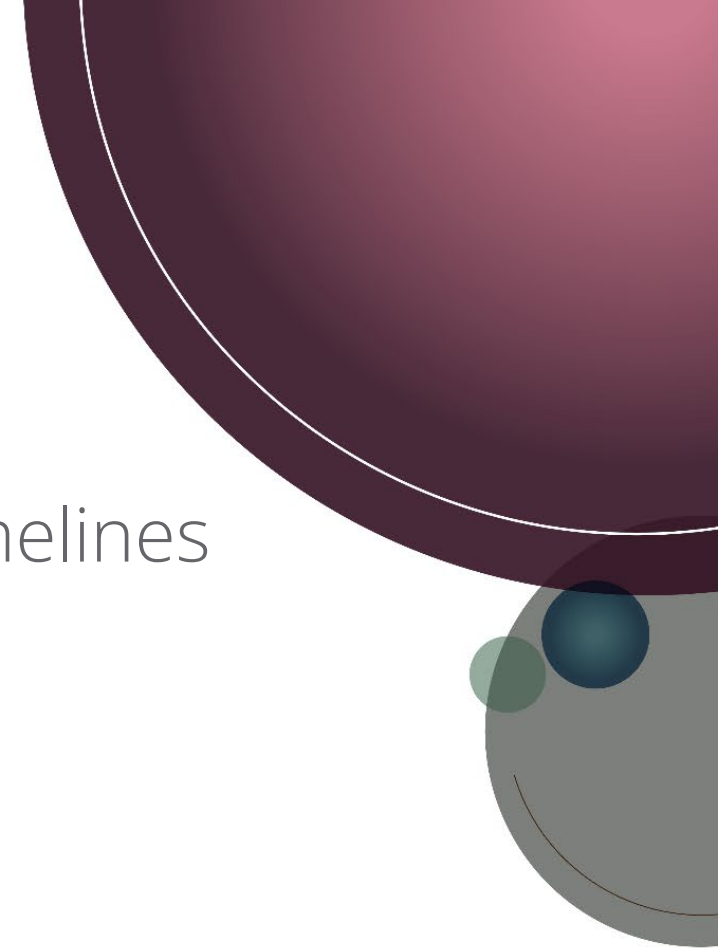
Adam Viator, MLIS | Product Manager

Vision, decisions, designs, and development
insights into SirsiDynix's next generation
discovery platform



Agenda

- BLUEcloud Discovery vision and goals
- Development insights: team, initial roadmap, timelines
- Opportunities to get involved
- What to expect next





BLUEcloud Discovery Vision

High-level vision and goals for a modern Discovery Platform

What is BLUEcloud Discovery

- BLUEcloud Discovery is a cloud-born library resource discovery solution for public, academic, special, and K-12 libraries
- Natural upgrade path for Enterprise customers with updated, modern back-end architecture and user experience
- Like Enterprise,
 - Delivers a complete set of Discovery functionality by improving on what is available in Enterprise today
 - Can be utilized as your library's website with multiple "discovery profiles"
 - Offers a high degree of customizability with a component-based CMS design
 - Provides a central search for all your library's resources with improved bibliographic search including authority data and FRBR clustering
- Unlike Enterprise,
 - Leverage a much more flexible and stable component-based platform architecture that improves interoperability with other apps
 - Is a BLUEcloud application with improved administrative capabilities with an eye towards consortia
 - Utilizes a more automatic, and frequent deployment process
 - Has a fully described, public-facing API (incl. proxying existing APIs)
 - Expands the template/theme concept to offer an improved, out-of-the-box experience and easy discovery building tools

Definition of a component

- Distinct, self-contained functional parts that contributes to the whole
- Engineering builds common-components with their own configuration settings to be arranged like Lego building blocks
- A component can be:
 - My Account, or specific My Account features
 - Main navigation menu
 - Book carousels
 - Main search box
 - Search results display (default, rivers, bento, kid's, knowledge graphs)
 - Distinct box to execute JavaScript functions (Enrichments, API connections)
- Overarching styles ensure library-specific branding capabilities giving admins flexibility in look-and-feel design
- Verified components ensure all custom components are responsive



NORTHERN MICHIGAN'S LARGEST JOB DISPLAY

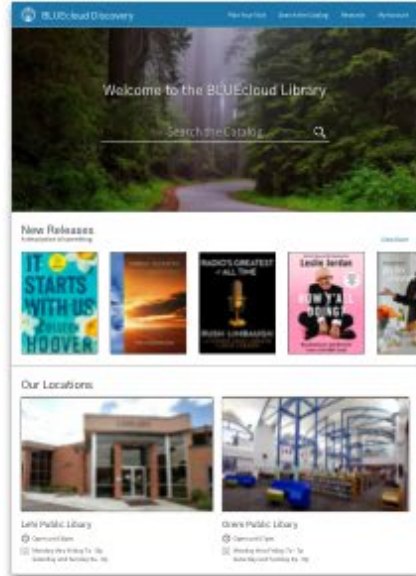
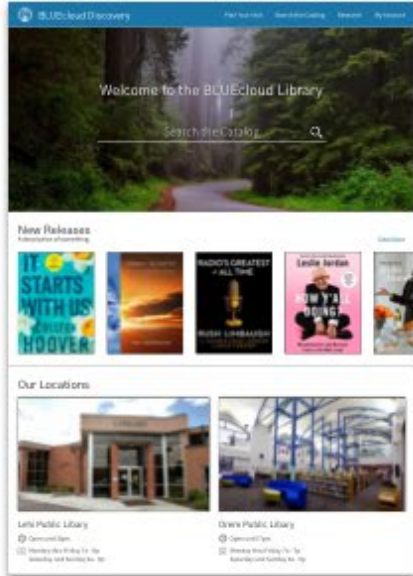


Discovery Builder

Search



Create New Discovery

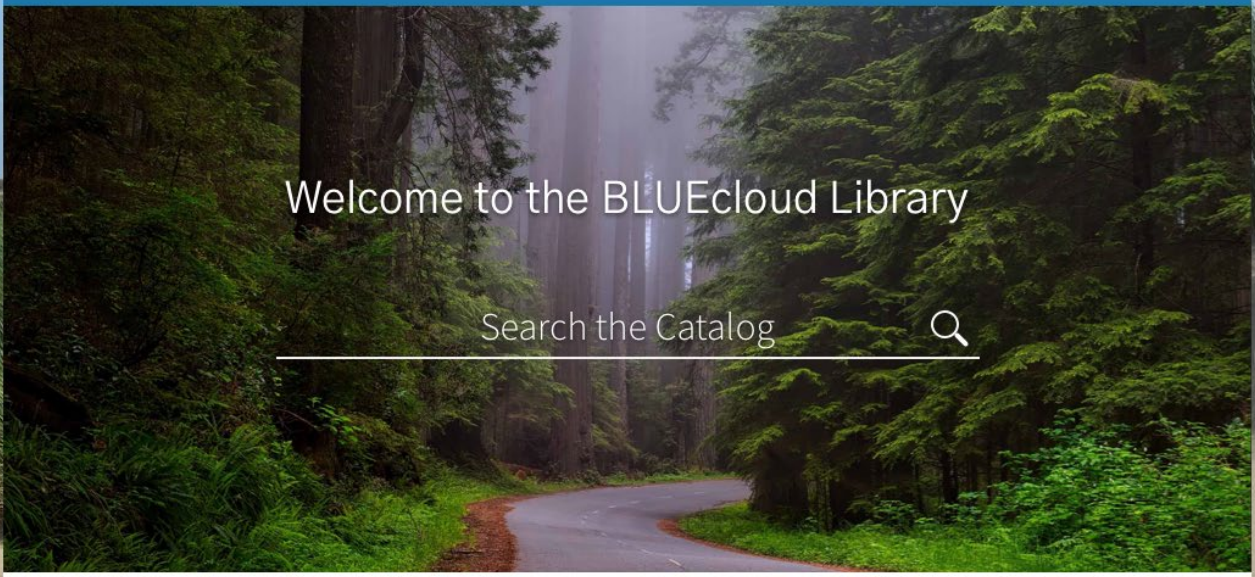


North Branch - Academic

Fulano de Tal Memorial

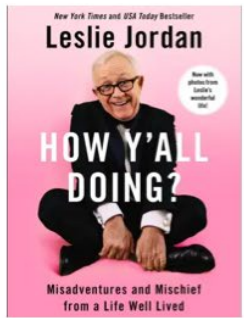
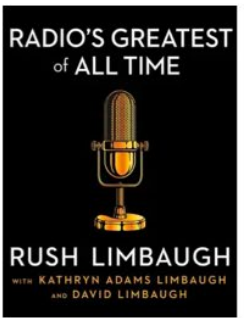
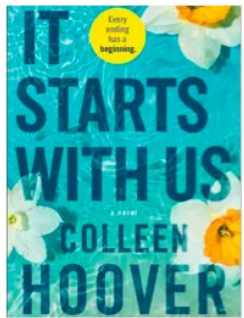
North Branch - Book Mobile

North Branch

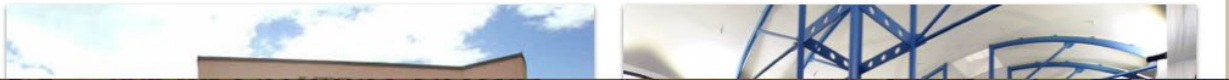


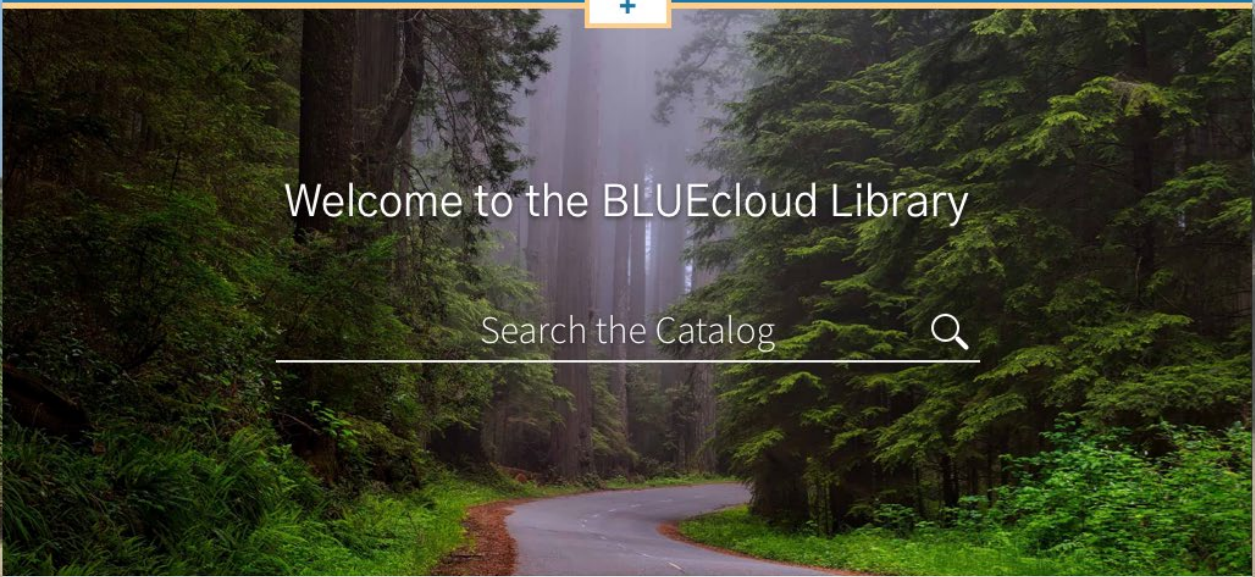
New Releases A description of something.

View More



Our Locations



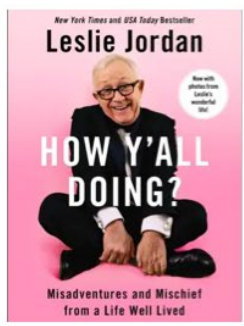
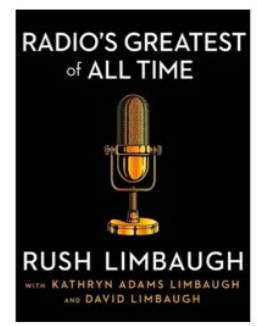
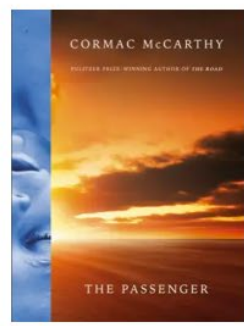


Welcome to the BLUEcloud Library

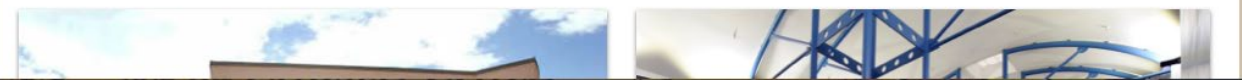
Search the Catalog

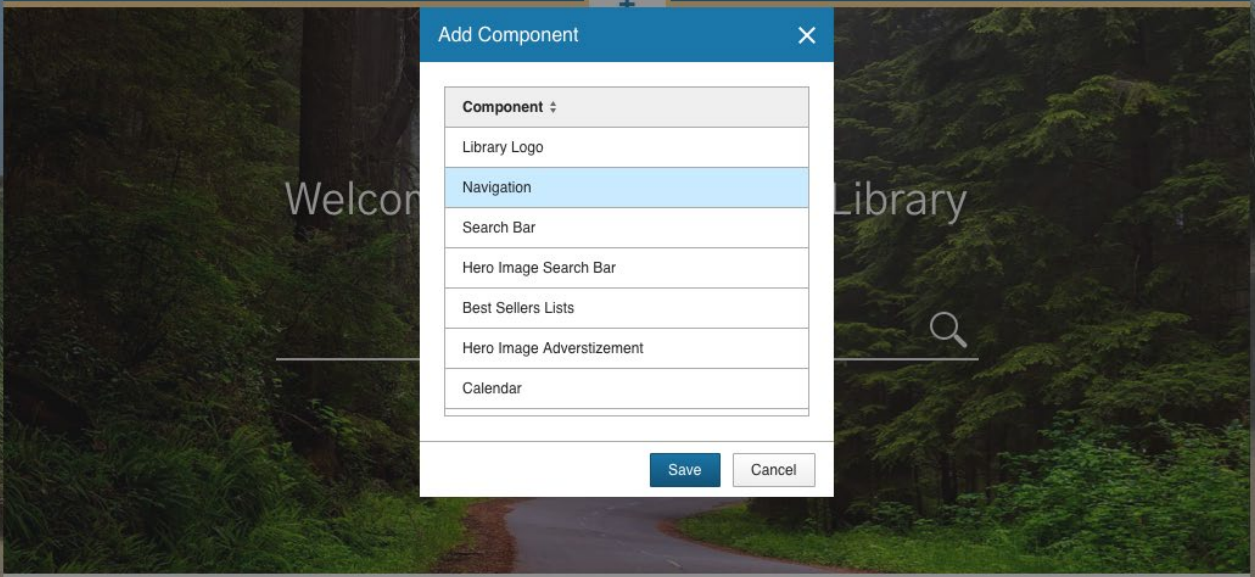
New Releases A description of something.

View More



Our Locations





Add Component [X]

- Component ▾
- Library Logo
- Navigation
- Search Bar
- Hero Image Search Bar
- Best Sellers Lists
- Hero Image Adverstizement
- Calendar

Save Cancel

New Releases

A description of something.

[View More](#)



Our Locations



← Home Page +

Components ↓

- Search Banner 6
- Quick Links** X 6
- Book River 6
- Book River 6
- Book River 6
- Calendar 6

Header

Enterprise My Account My Lists Local City Site

Navigation Revert to Default

Component Details

Name * Large Screens * Medium Screens * Small Screens *

Navigation 6 columns 6 columns 12 columns

Menu Options [New Menu Option](#)

Display Name ↓	Destination ↓
My Account	My Account
My Lists	My Lists
Local City Site	www.localgov.gov

Save Cancel

Search

Advanced Search

Quick Links

- Library Website
Cataloging
eResource Central
Search
Search
eResource Central

Upcoming Events

- Jun 4 2018 10:00am Story Time at the Library
Jun 24 2018 7:00pm Author James Dashner will be visiting the library to discuss his new book The Unknown. There will be a book signing after.
Jun 4 2018 10:00am Story Time at the Library
Jun 24 2018 7:00pm Author James Dashner will be visiting the library to discuss his new book The Unknown. There will be a book signing after.
Jun 4 2018 10:00am Story Time at the Library

NYT Best Sellers - Fiction



NYT Best Sellers - Fiction



NYT Best Sellers - Fiction





Search



Advanced Search

Quick Links

- [Library Website](#)
- [Cataloging](#)
- [eResource Central](#)
- [Search](#)
- [Search](#)
- [eResource Central](#)

NYT Best Sellers - Fiction



Upcoming Events

- Jun 4 2018 10:00am**
Story Time at the Library
- Jun 24 2018 7:00pm**
Author James Dashner will be visiting the library to discuss his new book The Unknown. There will be a book signing after.
- Jun 4 2018 10:00am**
Story Time at the Library
- Jun 24 2018 7:00pm**
Author James Dashner will be visiting the library to discuss his new book The Unknown. There will be a book signing after.

NYT Best Sellers - Fiction



NYT Best Sellers - Fiction





Enterprise

Search

Advanced Search

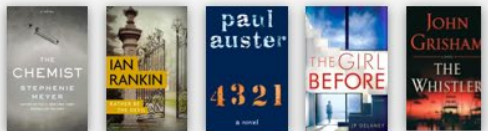
NYT Best Sellers - Fiction



NYT Best Sellers - Fiction



NYT Best Sellers - Fiction



Quick Links

- [Library Website](#)
- [Cataloging](#)
- [eResource Central](#)
- [Search](#)
- [Search](#)
- [eResource Central](#)

Upcoming Events

Jun 4 2018 10:00am
Story Time at the Library

Ease-of-Use Meets Customizability

- **Delivered Themes:** SirsiDynix arranged components that suite the needs of various library types. Get started with a solid discovery presence without the heavy lifting of system configuration or customization.
- **Layout Builder:** Easy visual configuration of Discovery components.
- **Style Guides:** Ensure consistency across discovery application and components with library-specific style guide to determine look and feel, logos, color schemes, etc.
- **Development and Submission Interface:** Take control of your discovery instance by utilizing our repository of development tools to modify or create your own components and integrations. All components will be verified and tested for inclusion in the component library ensuring custom code doesn't need to be revisited each release.
- **Component Library:** Select and position verified components into any discovery interface.

What is BLUEcloud Discovery

- Search
 - Leverage interlinked metadata with inclusion of authority records and an improved relevancy index for better data normalization and concept mapping
 - Explore other linked data standards, investigation of AI and API metadata connections and enhancements to better handle hierarchical exploration of concepts and power knowledge panels and graphs
 - Leverage Activity Metrics in Relevancy (number of checkouts, holds, copies, etc.)
- User/Patron Engagement
 - Modern login experience that supports ILS authentication; external IdPs and SSO protocols through CAS (SSOP); end-user MFA and other secure login features
 - Expanded user context for searching including search history, saved searches, and preferred filters
 - New user communication and feedback pathways with tighter integration with BC staff apps
 - Expanded BLUEcloud user record metadata to better tailor the user experience
 - More intelligent hold fulfillment that factors in user and item metadata in near real-time

Development Insights

A cross-team effort for modern platform needs

BLUEcloud Discovery Product Collective

A highly cross functional team of in-house developers, architects, and quality assurance specialists, led by a product management team with library industry backgrounds

Adam Viator, MLIS

Product Manager

13 Years in Libraries, 9 at
SirsiDynix



Andronikos Panayiotou

Product Manager

20 Years at SirsiDynix



BLUEcloud
DISCOVERY

Cross-Team Coordination

Cross-team engagement to build a better platform experience



Katie Glaeser, MLIS, EdD

Director/PdM, CloudSource

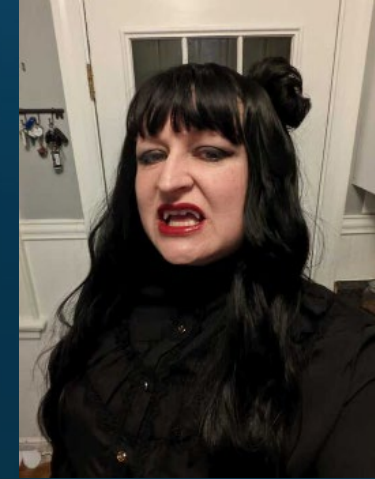
13 Years in Libraries, 6
months at SirsiDynix



James Goodman

Product Manager, BC Mobile

5 ½ Years at SirsiDynix



Maryśka Connolly, MLIS, MAT

Cloudsource Director of
Partnerships & Communications

10 Years in Libraries, 2 at SirsiDynix

Development and Timeline

- Expanded team and new processes to handle multiple streams of work
 - Shared architecture driven by multiple product owners: Andy, James, and Adam
 - Up to 4 simultaneous development streams
- Initial, high-level roadmap
 - In Development now (foundational)
 - New Patron Service
 - BLUEcloud Discovery UI (material UI, SirsiDynix theming)
 - Public-facing API and existing API proxying
 - Micro-content Doc framework
 - Translations framework
 - Development starting soon (functional, UI)
 - Connect to CloudSource search APIs
 - Bibliographic Datasets with Authorities, FRBR clustering, and other linked data approaches
 - Shared List Component and corresponding APIs
 - New “My Account” Dashboard
- Prototypes expected mid to late 2024 (available through participation in the SPP group, all are welcome! spp@sirsidynix.com)

How to Get Involved

Ideation, collaboration, and opportunities to get involved

Strategic Partner Programs

- You are the expert in what your library needs NOT what we *think* you need
- Exists to create customer participation in *new feature discussions, user centered design* and *product direction*
- Providing feedback on features earlier in development cycle *while there is still time to incorporate feedback into product*
- The feedback cycle continues all the way through delivery, giving you input for features, design approaches, UX reviews, early access to prototypes, and beta testing

Want to Get Involved? involved!)

Visit:

<https://support.sirsidynix.com/article/40>

Contact:

spp@sirsidynix.com

rachel.bowell@sirsidynix.com

adam.viator@sirsidynix.com

(Please get

What to Expect Next

Deeper functional discussions, key decisions, UX designs, and prototypes



As we proceed through planning, design, and development...

- Ongoing design decisions
 - Specific feature overviews
 - UX wireframes workshopping
 - Prototype demos and hands-on access
 - Release insights and public-facing roadmap
- 

Thanks!

Adam Viator, MLIS